

height thr: voxel p < p-uncorrected T(1,85)_min = 5.10
 cluster threshold: cluster p < cluster p-FDR corre... k_min =275

positive contrast ▾
 Surface display
 Volume display
 SPM display
 Export mask

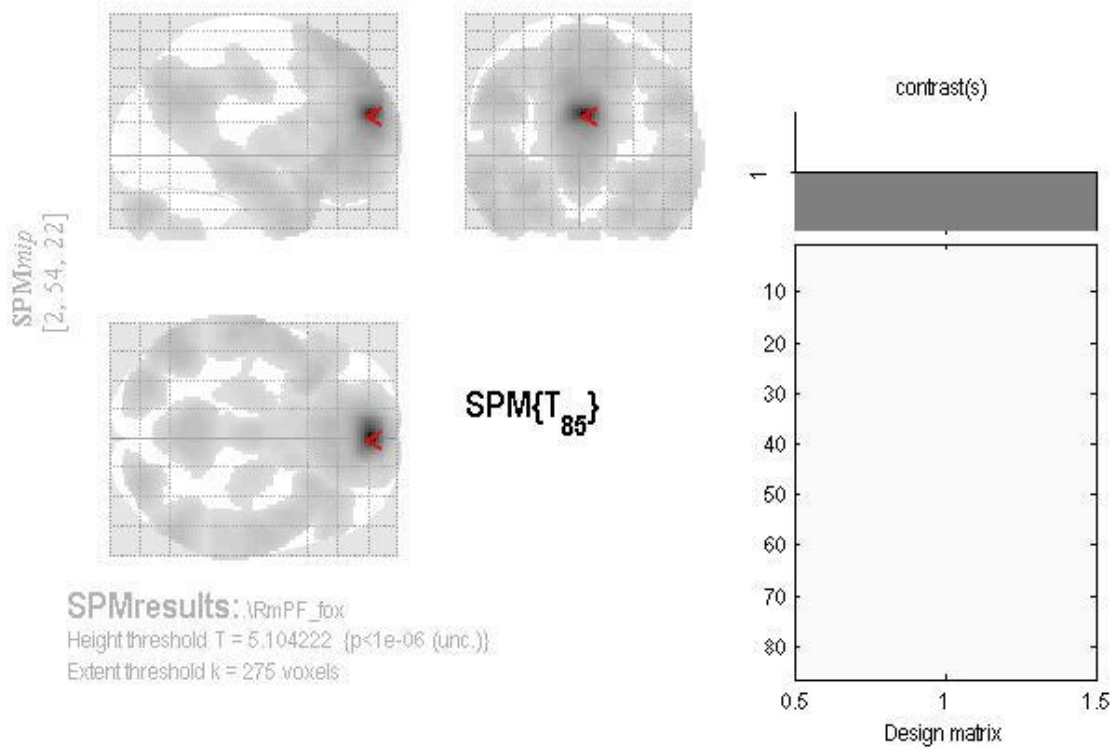


- 2018 voxels covering 67% of BA.8 (L). Dorsal Frontal Cortex
- 1906 voxels covering 24% of BA.6 (L). Premotor Cortex
- 1657 voxels covering 44% of BA.9 (L). Dorsolateral Prefrontal Cortex
- 1612 voxels covering 51% of BA.8 (R). Dorsal Frontal Cortex
- 1512 voxels covering 36% of BA.9 (R). Dorsolateral Prefrontal Cortex
- 1481 voxels covering 63% of BA.31 (L). Dorsal Posterior Cingulate Cortex
- 1443 voxels covering 54% of BA.21 (R). Middle Temporal Gyrus
- 1440 voxels covering 58% of BA.21 (L). Middle Temporal Gyrus
- 1398 voxels covering 72% of BA.32 (L). Dorsal anterior Cingulate Cortex
- 1307 voxels covering 16% of BA.6 (R). Premotor Cortex
- 1244 voxels covering 60% of BA.32 (R). Dorsal anterior Cingulate Cortex

Clusters (x,y,z)	k	cluster p-FWE	cluster p-FDR	cluster p-unc	peak p-FWE	peak p-unc
(+50 +00 -48)	46794	0.000000	0.000000	0.000000	0.000000	0.000000
(-58 -66 +18)	2574	0.000000	0.000000	0.000000	0.000000	0.000000
(+28 -86 -44)	1459	0.000000	0.000000	0.000000	0.000000	0.000000
(-18 -84 -42)	1355	0.000000	0.000000	0.000000	0.000000	0.000000
(+06 -54 -48)	297	0.000000	0.000000	0.000000	0.000000	0.000000
(-50 -14 +40)	277	0.000000	0.000000	0.000000	0.000182	0.000000
(+30 -28 +56)	275	0.000000	0.000000	0.000000	0.000020	0.000000

Import values Explore clusters

connectivity result



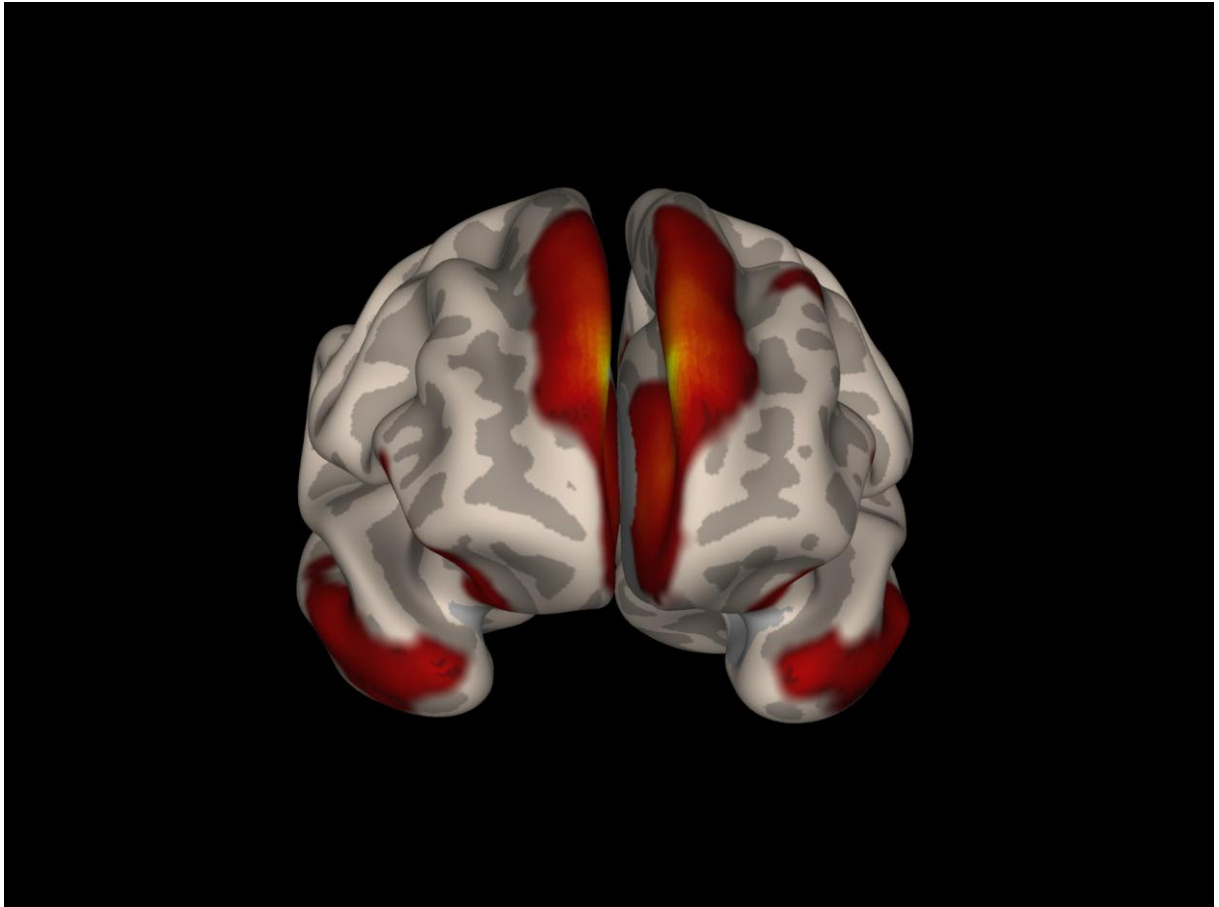
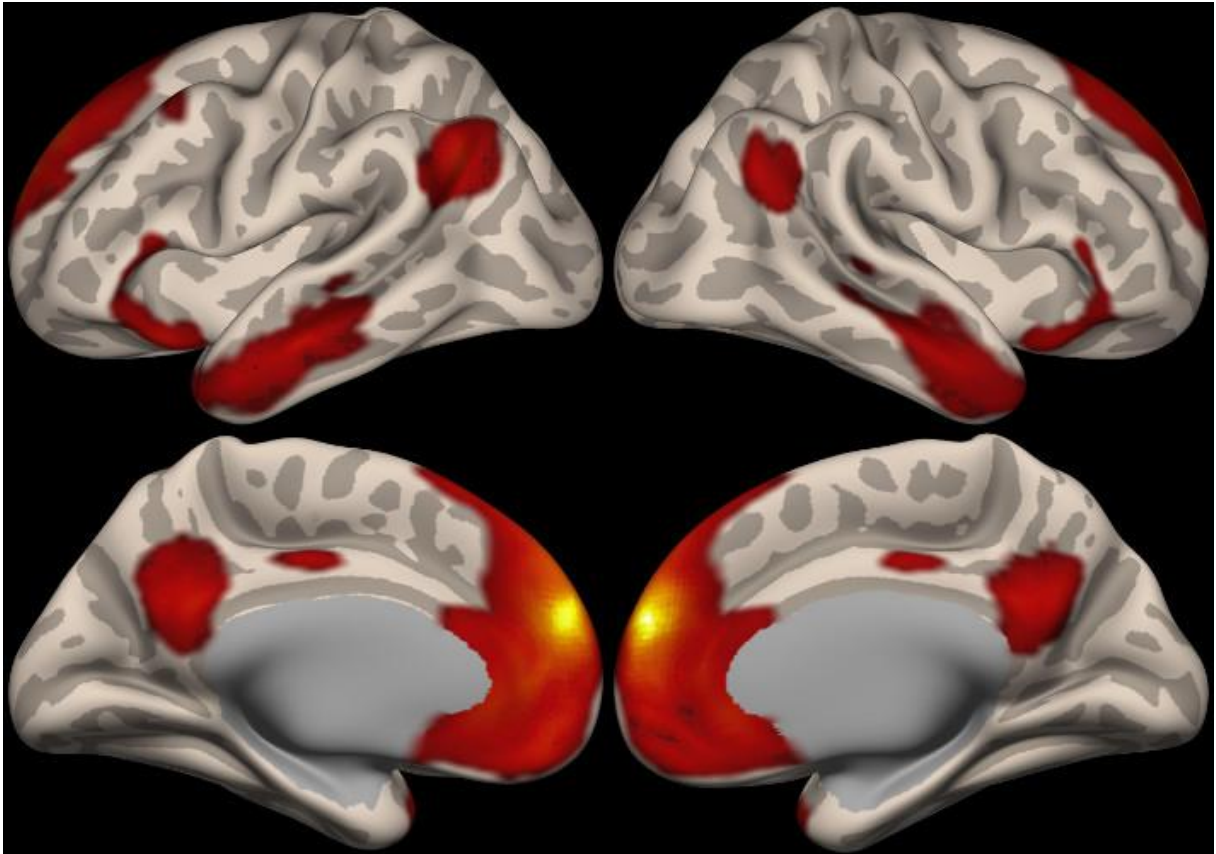
Statistics: p-values adjusted for search volume

set-level		cluster-level				peak-level					mm mm mm		
p	c	p _{FWE-corr}	q _{FDR-corr}	k _E	p _{uncorr}	p _{FWE-corr}	q _{FDR-corr}	T	(Z _≡)	p _{uncorr}			
0.000	7	0.000	0.000	46794	0.000	0.000	0.000	109.51	Inf	0.000	2	54	22
						0.000	0.000	22.98	Inf	0.000	-6	32	-2
						0.000	0.000	22.02	Inf	0.000	4	30	-6
		0.000	0.000	2574	0.000	0.000	0.000	21.42	Inf	0.000	-50	-62	32
						0.000	0.000	17.23	Inf	0.000	-50	-72	40
		0.000	0.000	1459	0.000	0.000	0.000	18.16	Inf	0.000	28	-82	-36
						0.000	0.000	9.04	7.54	0.000	48	-64	-44
		0.000	0.000	1355	0.000	0.000	0.000	17.87	Inf	0.000	-28	-80	-34
		0.000	0.000	297	0.000	0.000	0.000	8.78	7.39	0.000	6	-54	-48
						0.000	0.000	8.31	7.09	0.000	-6	-54	-44
		0.000	0.000	275	0.000	0.000	0.001	7.09	6.27	0.000	30	-28	56
						0.001	0.019	6.23	5.64	0.000	38	-22	48
		0.000	0.000	277	0.000	0.000	0.006	6.55	5.87	0.000	-50	-14	40
						0.005	0.134	5.72	5.24	0.000	-38	-20	50
						0.010	0.280	5.50	5.07	0.000	-58	-6	32

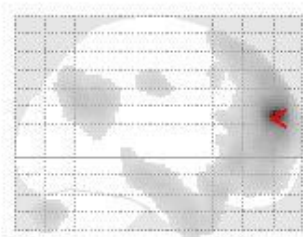
table shows 3 local maxima more than 8.0mm apart

Height threshold: T = 5.10, p = 0.000 (0.041)
 Extent threshold: k = 275 voxels, p = 0.000 (0.000)
 Expected voxels per cluster, <k> = 5.968
 Expected number of clusters, <c> = 0.00
 FWEp: 5.042, FDRp: 6.194, FWEc: 1, FDRc: 59

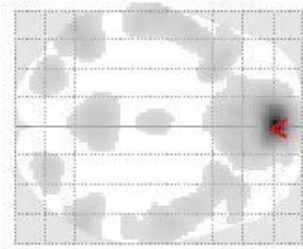
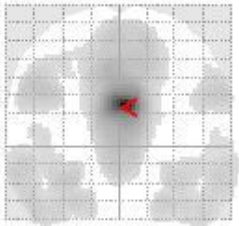
Degrees of freedom = [1.0, 85.0]
 FWHM = 12.5 12.3 11.9 mm mm mm; 6.3 6.2 6.0 (voxels)
 Volume: 1870776 = 233847 voxels = 957.3 resels
 Voxel size: 2.0 2.0 2.0 mm mm mm; (resel = 229.42 voxels)



SPM mip
[2, 54, 22]



connectivity result



SPM{T₈₅}

SPMresults: \RmPF_fox
Height threshold T = 10.000000 {T=10}
Extent threshold k = 50 voxels

